

HOW YOU CAN HELP IN THIS
EXTRAORDINARY STORY

As we seek to be good stewards of the gifts God has given us, and to meet the needs of our growing community, we are inviting you to partner with us in continuing *Something Extraordinary* at Jenison Christian School. If you've received this booklet, we know that you have a heart for our community and would ask that you prayerfully consider making a financial commitment in support of these upgrades. Commitments at all levels are important.

PLEDGED GIVING AMOUNTS

Level	Amount	3-year Pledge
LEGACY	\$1,000,000	\$333,333.34
BUILDER	\$500,000	\$166,666.67
PARTNER	\$100,000	\$33,333.34
SUPPORTER	\$50,000	\$16,666.67
VISIONARY	\$25,000	\$8,833.34
ADVOCATE	\$15,000	\$5,000.00
FRIEND	\$10,000	\$3,333.33

Here are a few things YOU can do to partner with us as we move forward:

- **Make a pledge or gift to the campaign!** JCS is accepting multi-year pledges toward this project, as well as gifts of cash, real estate, or appreciated assets. Gifts can be done online, or by check to JCS. Pledges are welcomed and can be made by contacting Liz Wiersema.
- **Talk to your friends and family!** We are looking for more donors who are passionate about the mission of Christian education.
- **Pray!** Join us as we cover this entire campaign in prayer, listening to God as He guides us.

For more information about the campaign, contact Liz Wiersema, Development Staff, at lwiersema@jenisonchristian.org or (616) 457-3301.

JCS Capital Campaign Leadership Team

Joe Oosterheert, Liz Wiersema, Jayme DeYoung, Jon Rozema, DJ VanderSlik, Lynn Bosscher

Cabinet Members

Doug and Jackie Brill, Andy and Kay DeVries, Crick Fles, Craig and Kathy Flietstra,, Dale and Deb Hoekwater, Mike and Brenda Lamfers, Dave and Jane Mulder, Jim and Carol Poll, Tom and Gwen Snoeyink, Ben and Andrea Westdorp

SOMETHING
EXTRAORDINARY

JCS CAPITAL CAMPAIGN



7726 Graceland Drive
Jenison, Michigan 49428
616.457.3301

JenisonChristian.org

THE JCS MASTER PLAN

In 2019, the JCS Board developed a strategic plan to sustain the current JCS building and provide extraordinary education for future generations. The design of this plan supports the mission and vision of JCS, the mission to educate children both spiritually and academically so that they are ready to serve in God's Kingdom in the 21st century. The flexibility of this master plan prioritizes maintenance and updates to the building as funds are raised.



PHASE 1 - COMPLETED
Exterior and Bathrooms

\$400,000 - FULLY FUNDED

- Replacement of worst sections of the roof
- Construction of a drop off loop
- Renovation of four bathrooms in the elementary wing, making them more modern and ADA- compliant



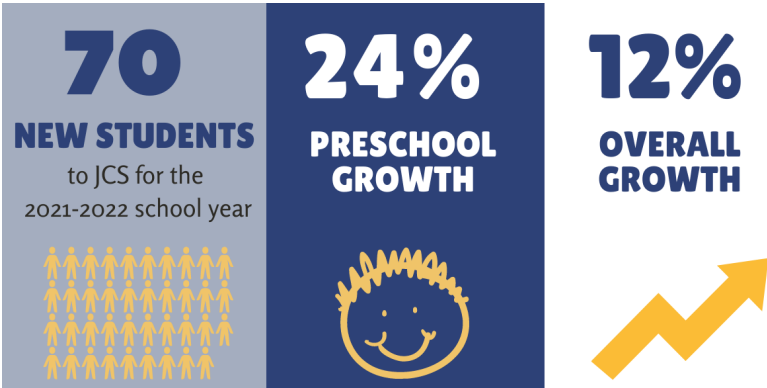
PHASE 2 - COMPLETED
Elementary Wing

\$1,900,000 - FULLY FUNDED

- Replacing one of the three existing boilers
- Fully renovating the 60 year old early elementary classrooms and hallways to facilitate 21st century learning
- Creating spaces for multi-grade collaboration, STEAM activities, and worship.
- Creating new spaces for community events and connections

JCS IS GROWING!

These past two summers have been a huge blessing to our school, especially as we faced challenges of COVID restrictions (a new pick-up line designed before we even knew about COVID - God's perfect timing!), and the blessings of growing enrollment. JCS has seen 12% growth this year in PK-8, and 24% growth in our preschool. Overall, we welcomed 70 more children into our school this year than last year!



PHASE 3 - STARTS SUMMER 2022
Preschool Wing

\$2,700,000

- Renovations of preschool entrance (to be completed Summer 2022)
- Addition of three classrooms, adding 4,625 sq. feet to the Preschool wing
- Renovation of all existing classrooms, bathrooms and hallways
- Relocation of JCS Childcare to Preschool wing
- Creating spaces for community-building activities, parent meetings and worship



PHASE 4, AND BEYOND

\$9,000,000

- Renovating the JCS main office
- Multi-use media lab/library to be used for daytime learning and after hours academic clubs
- Reconfiguring middle school entrance and connecting elementary and middle school wings of the building
- Renovating and expanding middle school classrooms
 - Creating middle school flexible workspaces
 - Creating middle school common areas for worship and large group learning
- Renovating the existing gym to create multi-purpose space and enhanced facilities for both school-wide/community performances and events and space for daily gross motor activity